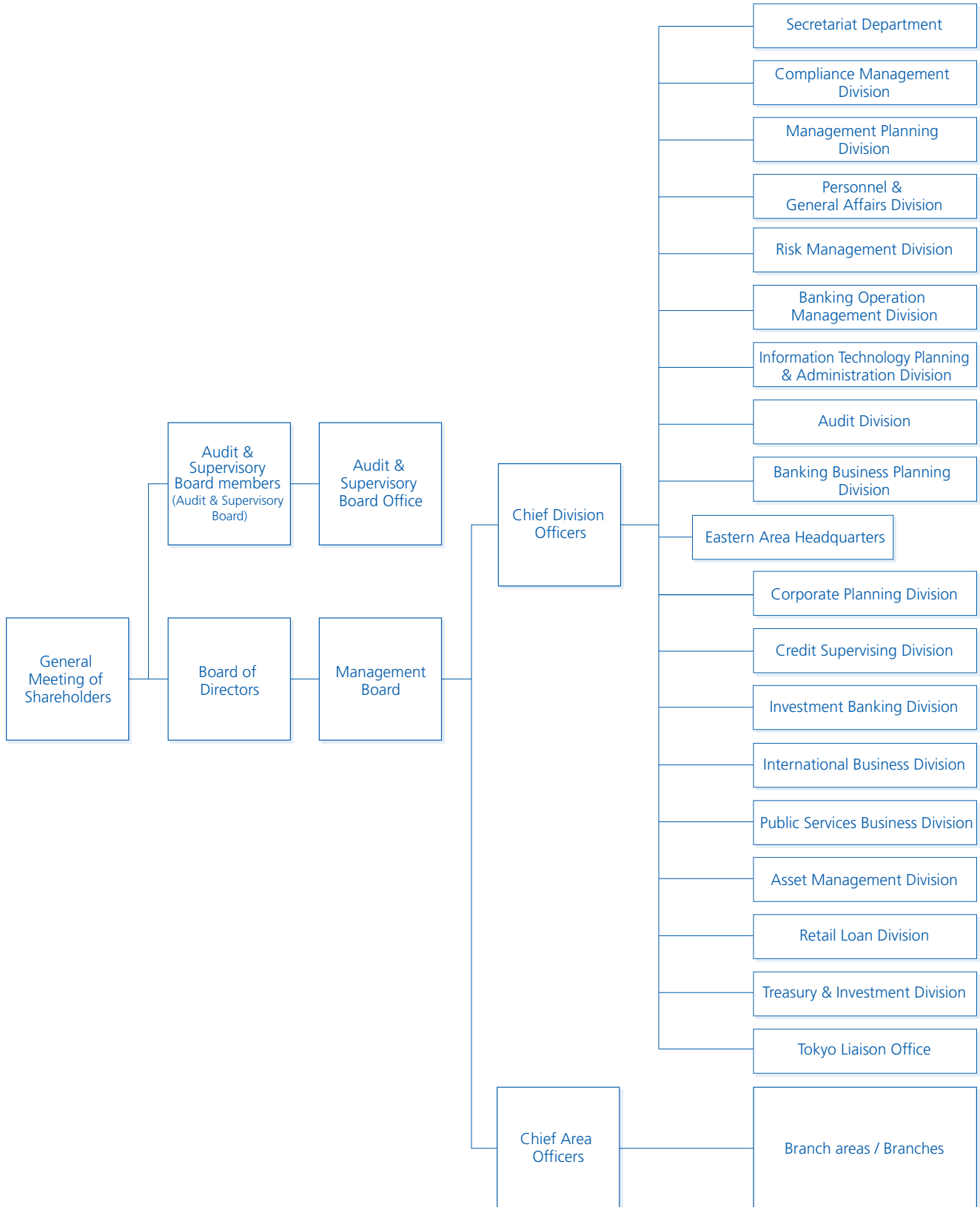


# Corporate Information

## Organization

(As of April 1, 2017)



## Board of Directors, Executive Officers and Audit & Supervisory Board Members

(As of June 28, 2017)

### Directors

Chairman	Isao Sumihiro
President	Koji Ikeda
Director & Senior Managing Executive Officers	Tohru Hirota Kichisou Miyoshi Yuji Yoshino
Director & Managing Executive Officers	Toshio Heya Yusou Araki
External Directors	Masahiro Sumikawa Kaori Maeda Satoshi Miura

### Executive Officers

Senior Managing Executive Officer	Satoru Noguchi
Managing Executive Officers	Minoru Ogawa Hiroyuki Tsumasaki Hiroshi Honkawa Yasushi Kojiri
Executive Officers	Hiroshi Iwamoto Ikuo Kojiri Masataka Hatate Katsuhiko Nakama Akira Maeda Masahiro Koike Atsuhiko Kunimura Akira Ogi Kimio Okano

### Audit & Supervisory Board Members

Audit & Supervisory Board Members	Hiroyuki Mizutani Hitoshi Katayama
External Audit & Supervisory Board Members	Yasutoshi Takei Yoshinori Takahashi Masako Yoshida

## Stock Information

(As of March 31, 2017)

Number of Shares Authorized	2,000,000 thousand
Number of Shares Issued	625,266 thousand
Number of Shareholders	17,116

## Major Shareholders

(As of March 31, 2017)

Shareholders	Number of shares (thousand)	Percentage of shares issued (%)
Japan Trustee Services Bank, Ltd. (Trust Account)	27,000	4.31
Meiji Yasuda Life Insurance Company	19,009	3.04
Sompo Japan Nipponkoa Insurance Inc.	16,687	2.66
CP Chemical Incorporated	14,927	2.38
The Master Trust Bank of Japan, Ltd. (Trust Account)	14,908	2.38
The Bank of Tokyo-Mitsubishi UFJ, Ltd.	13,088	2.09
Nippon Life Insurance Company	12,085	1.93
Sumitomo Life Insurance Company	12,076	1.93
The Chugoku Electric Power Co., Inc.	12,008	1.92
Mizuho Bank, Ltd.	11,500	1.83

Notes: 1. Numbers of shares less than one thousand have been omitted.

2. Percentage of shares issued is rounded down at the second decimal place.

## Shareholder Incentive Plan

We have established time deposits for shareholders and provide invitation tickets to the Hiroshima Museum of Art to improve shareholder satisfaction.

### ◆ Time deposits held by shareholders

Date of record for deciding on participating shareholders	March 31 every year		
Participating shareholders	Shareholders listed in the stockholders list who hold at least 1,000 shares at the date of record		
Plan period	Early July in the year of the date of record to late June the following year		
Number of shares held	1,000 shares or more Less than 5,000 shares	5,000 shares or more Less than 10,000 shares	10,000 shares or more
Maximum deposit	¥3 million	¥4 million	¥5 million
Offered rates	Over-the-counter interest rate on Super Teiki Yokin time deposit or Super Teiki Yokin time deposit 300, + <b>0.3%</b>	Over-the-counter interest rate on Super Teiki Yokin time deposit or Super Teiki Yokin time deposit 300, + <b>0.4%</b>	Over-the-counter interest rate on Super Teiki Yokin time deposit or Super Teiki Yokin time deposit 300, + <b>0.5%</b>
Deposit term	1 year		

### ◆ Tickets to the Hiroshima Museum of Art

We present tickets to the Hiroshima Museum of Art, a nonprofit organization, to our shareholders who make use of the Hirogin time deposits we have established as shareholder incentives.

#### ■ Overview

The Hiroshima Museum of Art was established in November 1978 by Hiroshima Bank in commemoration of the 100th anniversary of its foundation, as we move through history together with the region. We hope that the museum can offer spiritual repose to the people of Hiroshima, the city reduced to ruins by the atomic bomb on August 6, 1945. To this end, we have created a sanctuary of fragrant beauty around the themes of love and healing. We pray that it will also bring repose to the victims of the bomb that has led to today's Hiroshima, and peace to Hiroshima City.

**Address:** 3-2 Motomachi, Naka-ku,  
Hiroshima City 730-0011, Japan

**Opening Hours:** 9:00 a.m.–5:00 p.m. (Last entry 4:30 p.m.)

**Closed:** Mondays except during special exhibitions (or the following day if a public holiday falls on Monday) and December 29–January 2

Note: The museum is sometimes closed temporarily to change exhibitions.

#### ■ The collection

The approximately 300 paintings in the possession of the museum comprise modern European works centered on the French impressionists from the mid-nineteenth century, Romantics up to the Paris School, and modern Japanese works from the Meiji Period onward, including traditional-style Japanese paintings. The modern European works are permanently exhibited in the Main Hall.