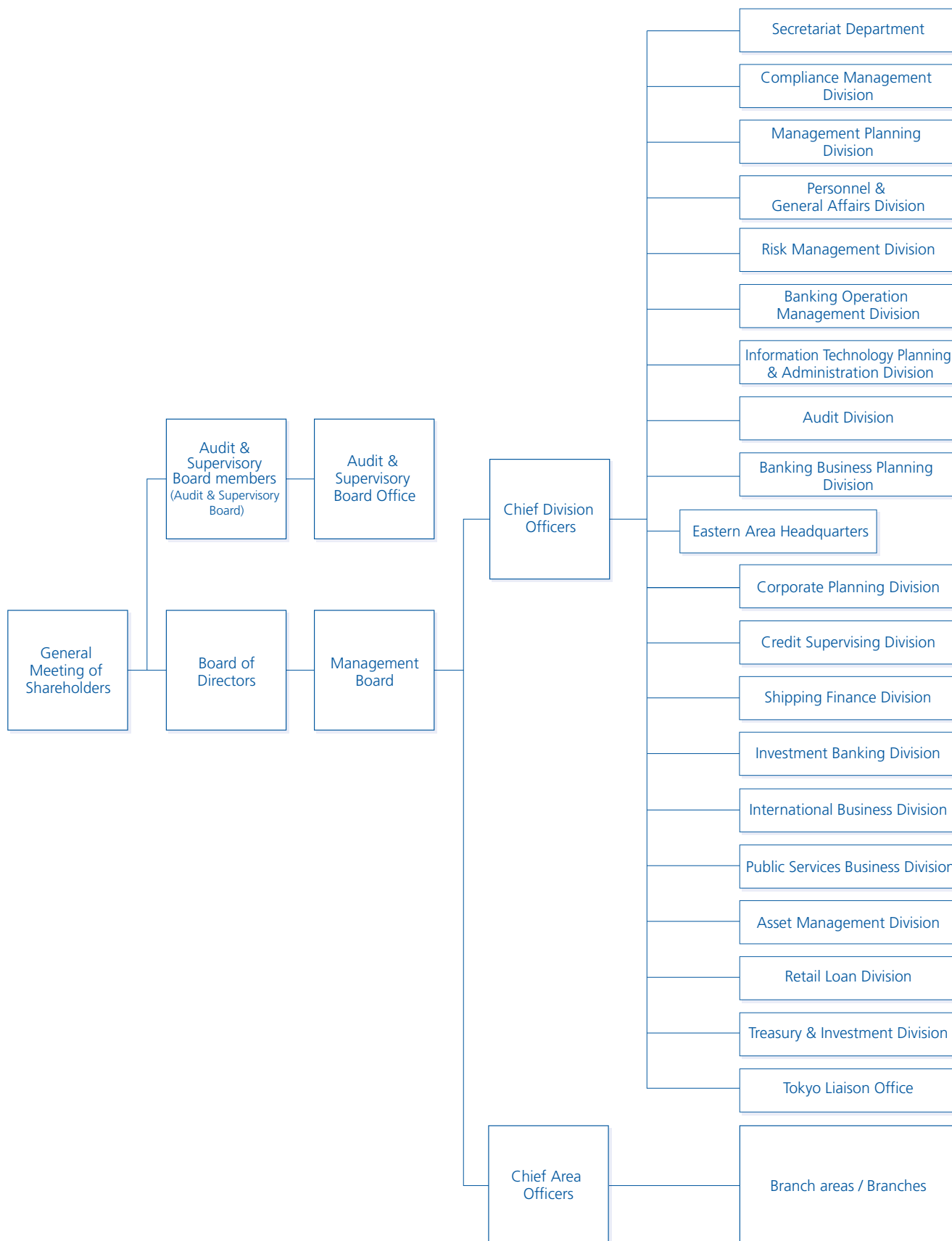


Corporate Information

Organization

(As of July 1, 2018)



Board of Directors, Executive Officers and Audit & Supervisory Board Members

(As of June 28, 2018)

Directors

Chairman	Koji Ikeda
President	Toshio Heya
Director & Senior Managing Executive Officers	Tohru Hirota Yusou Araki
Director & Managing Executive Officers	Yasushi Kojiri Katsuhiko Nakama Akira Maeda
External Directors	Masahiro Sumikawa Kaori Maeda Satoshi Miura

Executive Officers

Senior Managing Executive Officer	Hiroyuki Tsumasaki
Managing Executive Officers	Hiroshi Honkawa Ikuo Kojiri Masahiro Koike
Executive Officers	Masataka Hatate Atsuhiko Kunimura Akira Ogi Kimio Okano Hiroyuki Higashiyama Kazuo Kiyomune Fumitsugu Kariyada Hideki Toi Koji Hakoda Shinichi Fukamachi

Audit & Supervisory Board Members

Audit & Supervisory Board Members	Hiroyuki Mizutani Hitoshi Katayama
External Audit & Supervisory Board Members	Yasutoshi Takei Yoshinori Takahashi Masako Yoshida

Stock Information

(As of March 31, 2018)

Number of Shares Authorized	1,000,000 thousand
Number of Shares Issued	312,633 thousand
Number of Shareholders	17,481

Major Shareholders

(As of March 31, 2018)

Shareholders	Number of shares (Thousand)	Percentage of shares issued (%)
Japan Trustee Services Bank, Ltd. (Trust Account)	16,162	5.17
The Master Trust Bank of Japan, Ltd. (Trust Account)	9,532	3.05
Meiji Yasuda Life Insurance Company	9,504	3.04
Sompo Japan Nipponkoa Insurance Inc.	8,343	2.67
CP Chemical Incorporated	7,463	2.39
Nippon Life Insurance Company	6,042	1.93
Sumitomo Life Insurance Company	6,038	1.93
The Chugoku Electric Power Co., Inc.	6,004	1.92
The Bank of Tokyo-Mitsubishi UFJ, Ltd.	5,794	1.85
Japan Trustee Services Bank, Ltd. (Trust Account 5)	5,563	1.78

Shareholder Incentive Plan

We have established shareholder incentives for shareholders to improve their satisfaction.

◆ Shareholders eligible for the Shareholder Incentive Plan

Eligible shareholders' reference date	March 31 every year (hereafter, "the reference date")
Eligible shareholders	Shareholders who have more than 100 shares listed on the Bank's register of shareholders on the reference date
Operational period	From the beginning of July of the year containing the reference date to the end of June of the following year

◆ Content of the Shareholder Incentive Plan

Preferential tickets will be sent to the eligible shareholders.

One of the following four courses can be chosen for each preferential ticket.

Course name	Course overview
(1) Time deposit course	The courses provide cashback of 20% of the accumulated fee (excluding tax, ¥20,000 maximum) on each transaction.
(2) Investment trust course	
(3) Inheritance-related service course	
(4) Hirogin Securities-related trading course	

* Information about the Shareholder Incentive Plan is provided in branches and on the Bank's website. For details, please ask at the counter.

* Please study the explanatory notes for each course before choosing it.

* Please be aware that the Shareholder Incentive Plan may include revisions to the incentive plan itself, including terminating the use of the plan due to changes in the business environment and other factors, or have its contents changed.

We present tickets to the Hiroshima Museum of Art, a nonprofit organization, to our shareholders who make use of the Hirogin time deposits we have established as shareholder incentives.

◆ Foundation Hiroshima Museum of Art

■ Overview

The Hiroshima Museum of Art was established in November 1978 by Hiroshima Bank in commemoration of the 100th anniversary of its foundation, as we move through history together with the region. We hope that the museum can offer spiritual repose to the people of Hiroshima, the city reduced to ruins by the atomic bomb on August 6, 1945. To this end, we have created a sanctuary of fragrant beauty around the themes of love and healing. We pray that it will also bring repose to the victims of the bomb that has led to today's Hiroshima, and peace to Hiroshima City.

Address: 3-2 Motomachi, Naka-ku, Hiroshima City (in Central Park) 730-0011, Japan

Opening Hours: 9:00 a.m.–5:00 p.m. (Last entry 4:30 p.m.)
* Open until 7:00 p.m. on Fridays during special exhibitions

Closed: Mondays except during special exhibitions (or the following day if a public holiday falls on Monday) and December 29–January 2
Note: The museum is sometimes closed temporarily to change exhibitions.

■ The collection

The art gallery exhibits some 80 works throughout the year, comprising European modern art works centered on the French Impressionists from the Romantics in the mid-19th century to the Ecole de Paris school, including paintings by Degas, Monet, Renoir, Van Gogh and Picasso, and Japanese modern art works since the Meiji Period, including traditional-style nihonga works.